





## Mulching Heads

IMH Series

 **INDECO**  
A TOOL FOR EVERY JOB



# Application areas

		IMH	SG
<div> Land Clearing</div>	Land clearing	• Right of way clearance and maintenance	<input type="radio"/>
		• Power transmission/distribution line and substation clearance	<input type="radio"/>
		• Railway maintenance	<input type="radio"/>
		• Residential and farm clearing	<input type="radio"/>
		• Highway maintenance	<input type="radio"/>
		• Pipeline clearance	<input type="radio"/>
		• Ski resorts and other speciality field maintenance	<input type="radio"/>
		• Roadside maintenance	<input type="radio"/>
<div> Agriculture and Forestry</div>	Gardening & landscaping	• Fencing	
		• Ground excavation	
		• Rock breaking	
		• Pit planting	
		• Stump splitting	
		• Golf course maintenance	<input type="radio"/>
		• Root and stump grinding	<input type="radio"/>
		• Hedgerow clearance and rejuvenation	<input type="radio"/>
		• Grinding of logging residues	<input type="radio"/>
	Forestry	• Timber log handling	
		• Maintenance of green area, small trees and brush	<input type="radio"/>
		• Creation and upkeep of woodland corridors and firebreaks	<input type="radio"/>
		• Tree clearing	<input type="radio"/>
		• Vegetation clearing	<input type="radio"/>
		• Branch clearing	<input type="radio"/>



# IMH

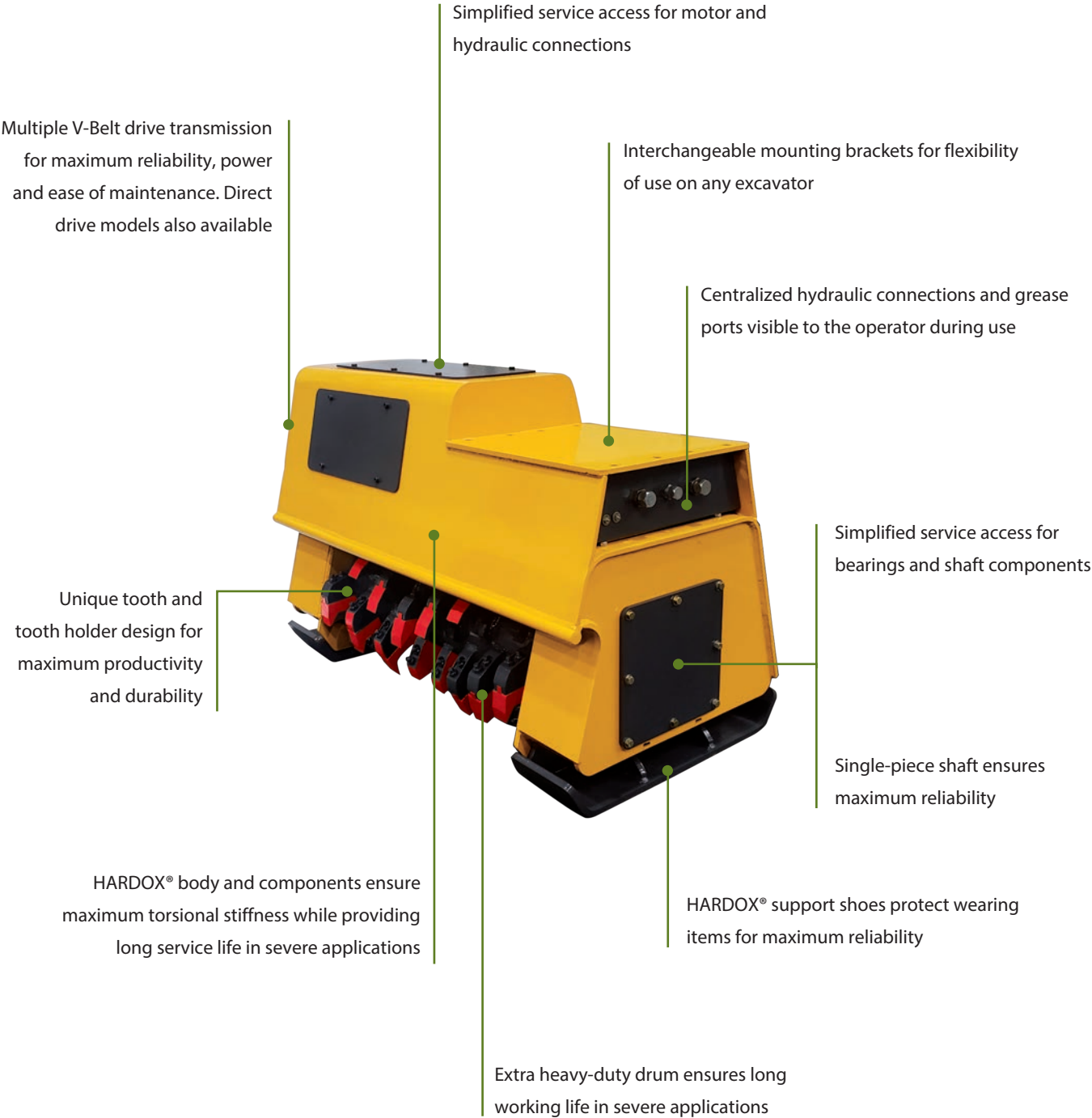
## Mulching Heads

Indeco's new IMH series of hydraulically driven, boom-mounted mulching heads are specifically designed for a broad range of land clearing, site preparation, invasive vegetation species management, storm damage removal and clean-up applications. Tailored to fit a wide range of carriers from 5 to 50 tons, the IMH series is available in a number of direct-drive and belt-driven high-performance models and features HARDOX® components and bodies for optimal service life and lasting reliability.

Achieving greater productivity and cost-efficiency than a dedicated crew of workers with chainsaws and chippers, IMH Mulching Heads fully leverage your existing equipment investments by utilizing the excavator, back-hoe or skid-steer auxiliary hydraulics to turn your existing machine into a powerful land-clearing tool.

With a low initial cost, single man/machine operation for reduced processing costs and ease of use, the IMH series requires no additional specialized machinery and can be used on multiple machines to deliver a superior return on investment for your mulching applications.

In addition to superior productivity gains, mulching with the Indeco IMH series is also a more environmentally friendly process than conventional burning by putting back unwanted vegetation into the ecosystem as mulch. This protects newly cleared areas from wind and rain erosion while providing the soil with beneficial microorganisms.



# IMH

## for compact excavators



Technical Data	IMH 5	IMH 6
Type of carrier	1 3 4	1 3 4
Cutting width	30 in	30 in
GPM range	12 ÷ 18 gpm	16 ÷ 24 gpm
Number of teeth	14	14
Drum diameter	8 in	8 in
Motor specification	Gears	Gears
Transmission	Direct	Direct
Working pressure	3000 ÷ 4000 psi	3000 ÷ 4000 psi
Attachment operating weight*	1180 lbs	1220 lbs
Excavator weight	5 ÷ 10 tons	6 ÷ 12 tons

\*The attachment operating weight includes mounting bracket compatible with Indeco construction standards. Any differences in weight may be due to a different mounting bracket configuration.



Technical Data	IMH 8	IMH 10
Type of carrier	1 3 4	1 3 4
Cutting width	30 in	34 in
GPM range	18 ÷ 27 gpm	18 ÷ 27 gpm
Number of teeth	14	45
Drum diameter	8 in	8 in
Motor specification	Pistons	Pistons
Transmission	Direct	Direct
Working pressure	3000 ÷ 4000 psi	3500 ÷ 5000 psi
Attachment operating weight*	1310 lbs	1620 lbs
Excavator weight	8 ÷ 15 tons	10 ÷ 18 tons

N.B. All illustrations and numerical data in this catalog are purely indicative and subject to change at our discretion and without notice. We therefore reserve the right to modify them with a view to improving and continuously developing our product.

### Carrier key



### compatibility

Suggested uses on machines with an overall weight (in tons):





# IMH for excavators



Technical Data	IMH 15	IMH 19
Type of carrier	4 5	5
Cutting width	40 in	40 in
GPM range	25 ÷ 40 gpm	36 ÷ 50 gpm
Number of teeth	42	40
Drum diameter	12 in	12 in
Motor specification	Pistons	Pistons
Transmission	Belt	Belt
Working pressure	3500 ÷ 5000 psi	3500 ÷ 5000 psi
Attachment operating weight*	3300 lbs	3400 lbs
Excavator weight	15 ÷ 25 tons	19 ÷ 30 tons

\*The attachment operating weight includes mounting bracket compatible with Indeco construction standards. Any differences in weight may be due to a different mounting bracket configuration.



Technical Data	IMH 28
Type of carrier	5
Cutting width	50 in
GPM range	50 ÷ 70 gpm
Number of teeth	48
Drum diameter	18 in
Motor specification	Pistons
Transmission	Belt
Working pressure	3500 ÷ 5000 psi
Attachment operating weight*	4600 lbs
Excavator weight	28 ÷ 45 tons

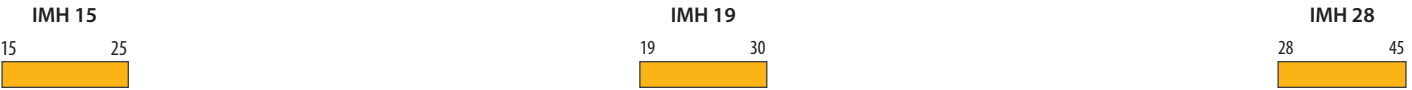
N.B. All illustrations and numerical data in this catalog are purely indicative and subject to change at our discretion and without notice. We therefore reserve the right to modify them with a view to improving and continuously developing our product.

## Carrier key



## compatibility

Suggested uses on machines with an overall weight (in tons):





# IMH for Skid Steers



Technical Data	IMH 3.5 SS
Type of carrier	2
Cutting width	57 in
GPM range	25 ÷ 40 gpm
Number of teeth	54
Drum diameter	8 in
Motor specification	Pistons
Transmission	Belt
Working pressure	3500 ÷ 5000 psi
Attachment operating weight*	2530 lbs
Excavator weight	3.5 ÷ 6 tons

\*The attachment operating weight includes mounting bracket compatible with Indeco construction standards. Any differences in weight may be due to a different mounting bracket configuration.

N.B. All illustrations and numerical data in this catalog are purely indicative and subject to change at our discretion and without notice. We therefore reserve the right to modify them with a view to improving and continuously developing our product.



## Carrier key

1

Compact excavator

2

Miniloader

3

Backhoe loader

4

Wheeled excavator

5

Tracked excavator

## compatibility

Suggested uses on machines with an overall weight (in tons):

IMH 3.5 SS





# IMH SG

## Stump Grinders

When the going gets tough, it's time for the tough to take over. IMH SG Stump Grinders are the ideal tools for clearing wooded areas after the taller trees have been cut. After felling a tree, you may need to remove the tree stump from the ground for aesthetic or safety reasons, especially to counteract soil erosion. Using the stump grinder reduces both removal and disposal costs. Available in two different models for carriers from 16 to 45 tons, they are easy to use and ensure maximum grinding efficiency.



Technical Data	IMH SG16	IMH SG20
Type of carrier	45	45
GPM range	25 ÷ 40 gpm	40 ÷ 60 gpm
Number of teeth	40	12
Motor specification	Pistons	Pistons
Transmissions	Belt	Belt
Working pressure	3500 ÷ 5000 psi	3000 ÷ 5000 psi
Attachment operating weight*	1850 lbs	1850 lbs
Excavator weight	16 ÷ 25 tons	20 ÷ 45 tons

\*The attachment operating weight includes mounting bracket compatible with Indeco construction standards. Any differences in weight may be due to a different mounting bracket configuration.

N.B. All illustrations and numerical data in this catalog are purely indicative and subject to change at our discretion and without notice. We therefore reserve the right to modify them with a view to improving and continuously developing our product.

Carrier key

1

2

3

4

5

Compact excavator

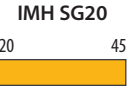
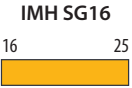
Miniloader

Backhoe loader

Wheeled excavator

Tracked excavator

compatibility Suggested uses on machines with an overall weight (in tons):





# Applications

## Land clearing

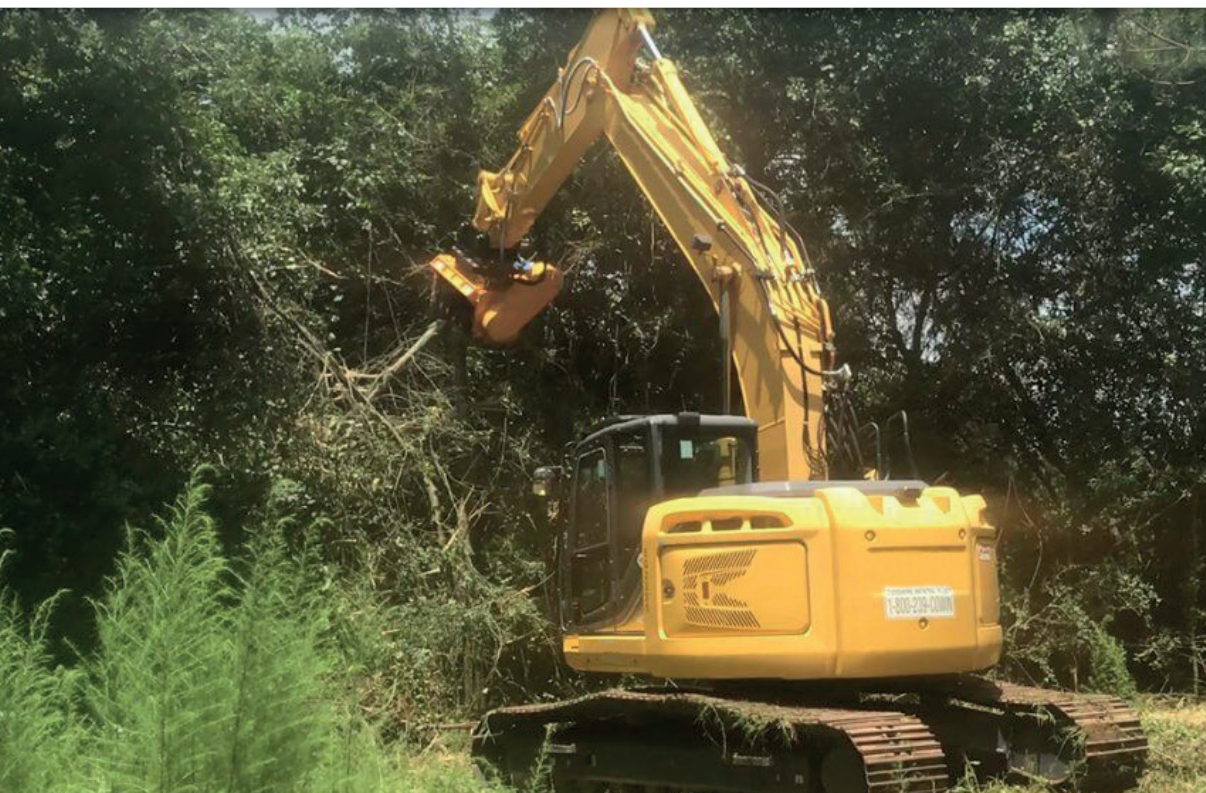
IMH Mulching Heads are the perfect tools for clearing, cleaning up and periodically maintaining areas subject to becoming overgrown by vegetation. These can include pipelines, railway lines, ski slopes, electricity pylons and highways, as well as residential and commercial green areas. Powerful and easy to handle, they make it possible to take action quickly and efficiently, ensuring optimum results with minimum effort.

## Forestry

Enjoying nature means first of all making it accessible - shaping it to our needs and making sure that it can develop properly. IMH Mulching Heads are useful tools for jobs involving green area maintenance, undergrowth clearance, firebreak creation and upkeep, as well as tree, brush, vegetation and branch clearing.

## Gardening & Landscaping

IMH Mulching Heads and SG Stump Grinders are ideal tools in special applications involving reshaping the landscape such as golf course creation and upkeep, hedgerow rejuvenation, as well as stump, root and logging residue removal.





## The full range of other Indeco products

Products			Weight			Products			Weight			Products			Weight		
IFP	8 X		1650	lbs		IMP*	45		9900	lbs		ISS***	5/7		1250	lbs	
IFP	13 X		2900	lbs		IHC	50		450	lbs		ISS***	10/20		5280	lbs	
IFP	19 X		4000	lbs		IHC	70		1000	lbs		ISS***	20/30		8030	lbs	
IFP	28 X		6200	lbs		IHC	75		1100	lbs		ISS***	25/40		10560	lbs	
IFP	35 X		7600	lbs		IHC	150		2150	lbs		ISS***	30/50		13420	lbs	
IFP	45 X		10050	lbs		IHC	250		2850	lbs		ISS***	35/60		16720	lbs	
IRP	5 X		1300	lbs		IHC R	50		950	lbs		ISS***	45/90		22880	lbs	
IRP	11 X		2550	lbs		IHC R	70		1400	lbs		IMH	5		1180	lbs	
IRP	18 X		3750	lbs		IHC R	75		1500	lbs		IMH	6		1220	lbs	
IRP	23 X		5100	lbs		IHC R	150		2650	lbs		IMH	8		1310	lbs	
IRP	29 X		6500	lbs		IHC R	250		3350	lbs		IMH	10		1620	lbs	
IRP	36 X		7950	lbs		IMG S**	400		850	lbs		IMH	15		3300	lbs	
IRP	45 X		9900	lbs		IMG S**	600		1300	lbs		IMH	19		3400	lbs	
IMP*	15		3300	lbs		IMG S**	1200		2550	lbs		IMH	28		4600	lbs	
IMP*	20		4600	lbs		IMG S**	1700		3550	lbs		IMH	3.5 SS		2530	lbs	
IMP*	25		5300	lbs		IMG S**	2300		4800	lbs		IMH	SG16		1850	lbs	
IMP*	35		7700	lbs		IMG S**	2800		5850	lbs		IMH	SG20		1850	lbs	

\*Crusher configuration - \*\*Sorter configuration - \*\*\*Third-member configuration

Indeco North America  
135 Research Drive  
Milford CT, 06460  
ph. (203) 713-1030 - fax (203) 713-1040  
www.indeco-breakers.com

USA

The contents of this publication may not be reproduced in whole or in part without prior authorization from the Indeco Ind. SpA. All rights reserved.

Trademarks used in this catalog are the property of their respective holders.