



indecommunity

Ed. n°18 - April 2025

All the latest
products
at Bauma
2025

EN

Two HP hammers
demolish a dam
in the Rocky Mountains

An IMP and an IMG
working in Eden park,
Auckland

Two hammers
on the banks of
the Werribee river

Our people
in Canada



ON THE COVER
An HP 5000 (HP 3000 for the European market) demolishes a dam in Douglas

COPYWRITING AND ART DIRECTION
CarucchiChiurazzi

We would like to thank:

Mike Beeler Equipment Services, Big Sky Civil Constructors, Montana Civil Constructors and Indeco North America for the article entitled "Two HP 5000 hammers demolish a dam in the Rocky Mountains" and photos

Ward Demolition, our dealer Crush & Screen and Indeco Australia for the article entitled "Grandstand for an IMP 15 and an IMG 600 in Eden Park, Auckland" and photos

Jaydo Construction, Great Western Water and Indeco Australia for the article entitled "Two Indeco hammers working on the banks of the Werribee river" and photos



Indeco ind S.p.a.
Viale Lindemann, 10 z.i.
70132 Bari - Italia
tel. +39 080 531 33 70
fax +39 080 531 79 76
info@indecos.it
www.indecos.it

Content

Two HP 5000 hammers demolish a dam in the Rocky Mountains	4
Grandstand for an IMP 15 and an IMG 600 in Eden Park, Auckland	6
Two Indeco hammers working on the banks of the Werribee river	8
News	10
Our people	13
Our next appointments	14

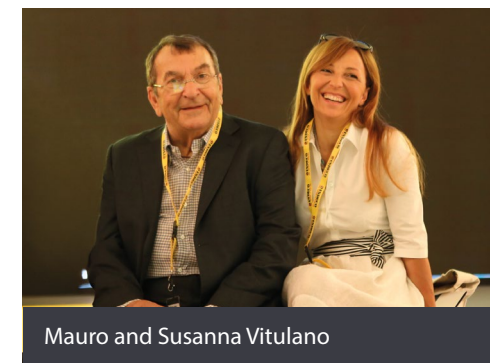
Editorial

A major change in the spirit of continuity

Co-founded and steered from the very beginning by Mauro Vitulano, Indeco has established itself in the global markets since 1976 as a benchmark for innovation, advanced technology, quality and reliability.

Showcasing groundbreaking technical and engineering leadership, Mauro Vitulano revolutionised the sector by inventing the first "intelligent demolition hammer" in the world (MES series, 1985), establishing himself as a pioneer in heat treatment and enlightened business management. As a result of his vision, Indeco has undertaken a path of responsible and sustainable development and has emerged as an excellence on the industrial scene. Indeco is one of the few long-established traditional companies in the hydraulic equipment industry that has kept its business structure unchanged. This has resulted in a balanced growth, consolidating the position of market leader, without ever losing sight of the importance of a financially sustainable management.

In July 2024, after 48 years of commitment and innovation, Mauro Vitulano decided to leave his operational role as Sole Director to become the chairman of the new Board of Directors. The company is now led by Susanna Vitulano, Mauro's daughter and group financial manager, who has taken on the role of CEO. Her appointment is a strategic generational transition to ensure the continuity



Mauro and Susanna Vitulano

and protection of Indeco's founding values: innovation, business ethics, constant search for improvement and attention to market and customer requirements, and converting them into real solutions.

Over the last few years, under the leadership of Mauro Vitulano, Indeco has faced major organisational and structural transformations, introducing innovative products and improving existing ones. Important investments have been made towards product and process innovation, contributing to the ongoing evolution of the company.

At the same time, Indeco has pushed for a generational change in its team, embracing young talents that bring a refreshing new approach coupled with enthusiasm. However, these new additions remain firmly anchored to the values and ethics that have defined Indeco over the years, thereby ensuring the continuity of a strong company culture consistent with its history.

In a constantly changing global market, Indeco remains true to its principles, ready to face the challenges of an extremely competitive industry, with a view to consolidating its position of excellence.

The whole Indeco family from all around the world would like to offer its sincerest thanks to Mauro Vitulano. The company's future successes will continue to reflect his vision, dedication, pioneering spirit and outstanding engineering and business expertise.

His legacy will continue to inspire our progress towards new challenges and triumphs.

Michele Vitulano
Marketing Manager

From around the world (USA)

Two HP 5000 hammers demolish a dam in the Rocky Mountains

The demolition of the LaPrele dam in Douglas, Wyoming, is one of the largest and most complex demolition projects in the Rocky Mountains. The dam, which is 42 metres high and 100 metres long, will produce more than 10,000 tonnes of concrete rubble.

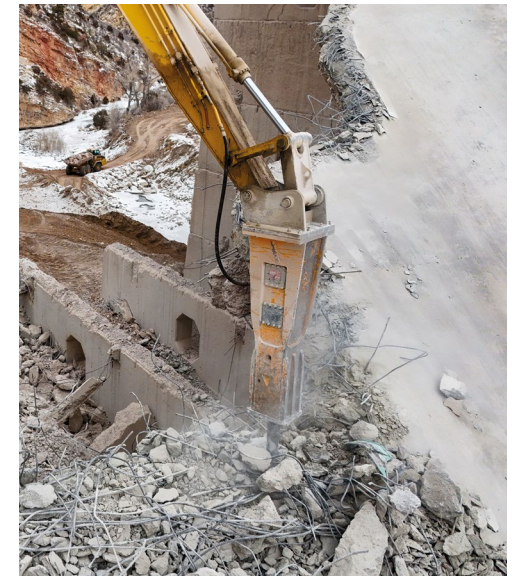
The project, which has been awarded to a joint venture between Big Sky Civil Constructors and Montana Civil Contractors, will entail the use of two HP 5000 hammers (HP 3000 for the European market) mounted on two Komatsu PC490-11 and PC800-8 Ultra High Reach demolition excavators. Both the machines and the hammers are supplied by Mike Beeler Equipment Services of Williamstown, New Jersey, a first-class Indeco rental and service centre since 2020.

The dam, built in 1909, was declared unsafe and slated for emergency demolition by the local government in 2024. The project will encounter some unprecedented environmental and economic challenges. Deterioration of the dam and its total risk of collapse posed a major threat to local farms and infrastructures. The framework of the project was outlined in September 2024 when the LaPrele irrigation district ordered the drainage of the reservoir to avoid a catastrophic failure. The LaPrele reservoir serves over 100 irrigators, including many cattle breeders and farmers who rely on the water for their livestock. Draining the reservoir and demolishing the dam will reduce the water supply for up to 4 years.

With so many people relying on this water, time is absolutely crucial for the success

of the project. Therefore, choosing Indeco machinery is an obvious decision because of its unrivalled performance and capabilities.

"Indeco hammers completely outperform those of other manufacturers, not only due to their performance but also because they are easy to use. - says Cody Barone, High Reach Operator for Montana Civil Contractors - Other hammers are not even comparable to Indeco ones. The 85 MPa reinforced concrete was impossible to demolish with other tools, but it just crumbles under the power of Indeco hammers. We work 11 hours a day, 7 days a week, and not once have we had a breakdown. It is by far the best hammer I have ever used."



An HP 5000 demolishes the
LaPrele dam in Wyoming



An IMG 600 jaw loading waste materials

From around the world (New Zealand)

Grandstand for an IMP 15 and an IMG 600 in Eden Park, Auckland

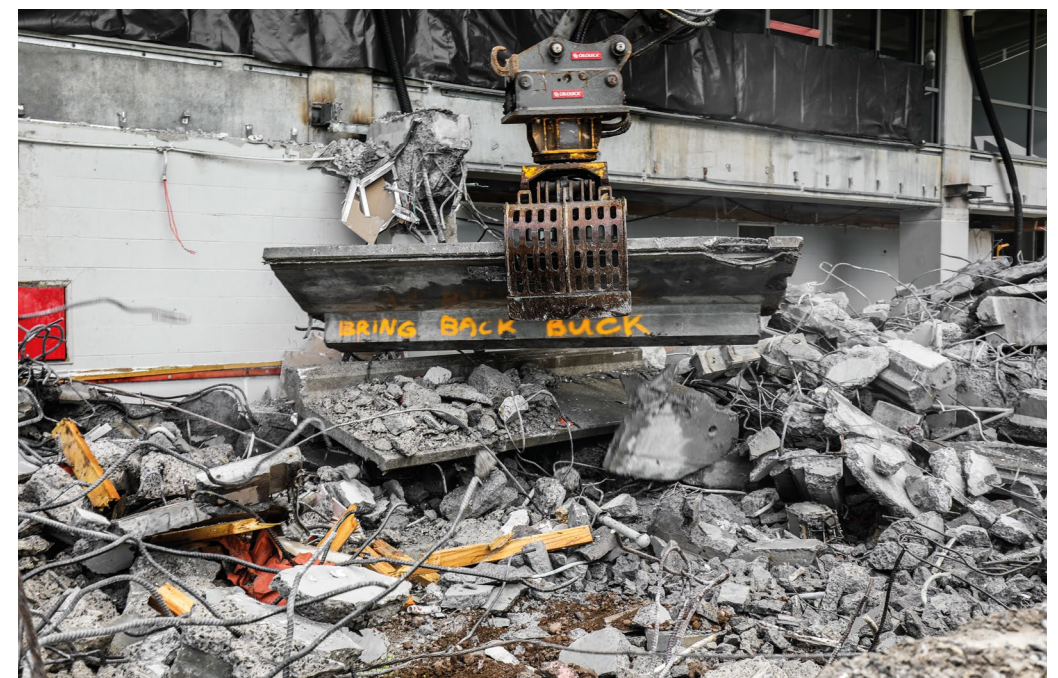
Ward Demolition is a family business established in Auckland in 1987 by Peter Ward. The company, with over 35 years' experience in residential, commercial and industrial demolition and resource recovery and recycling, currently has more than 100 employees and operates a fleet of more than 50 excavators ranging in size from 1 to 70 tonnes, including several high reach excavators, skid steer loaders and wheel loaders, and more than 20 trucks and trailers. Thanks to Indeco Australia's partnership with our dealer Crush & Screen for the distribution of Indeco products in New Zealand, which began in 2021, Ward Demolition now also boasts a large fleet of Indeco attachments: 2 HP series hammers, 2 ISS shears, 3 IMG Multi Grabs and 3 IMP multiprocessors in various

configurations. Indeed, it was the multi grabs and multiprocessors that featured in the latest of many jobs undertaken and completed by Ward Demolition at Eden Park Stadium in Auckland.

The company demolished the north grandstand in 1998 and the south and east grandstands in 2008, and in 2024 it was involved in the partial demolition of the west grandstand.

This job was to be completed within 3 weeks so that the stadium was ready for the next events scheduled.

The IMP 15 and IMG 600 mounted on an HX145CR excavator were used respectively to demolish and load the waste materials, all while strictly refraining from passing over the playing field.





As the multiprocessor demolished and crumbled the concrete structure, the multi grab cleared the field and loaded the waste materials onto trucks.

The IMP 15 multiprocessor also allowed us to work with very high levels of precision and safety, even close to the maxi-screen, and to finish demolishing the surrounding concrete without causing any damage to the substrate. Ward Demolition is extremely satisfied with the quality and efficiency of Indeco products and the support of our dealer Crush & Screen.

From around the world (Australia)

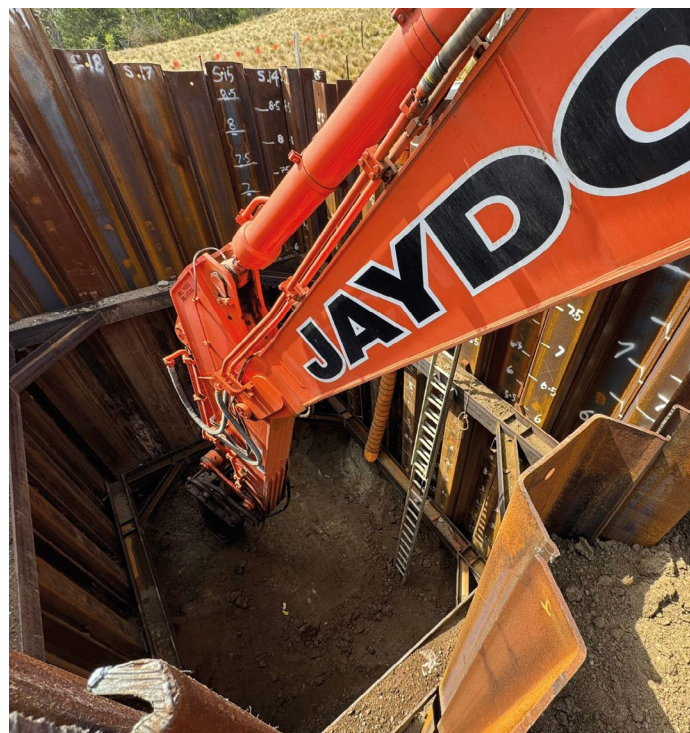
Two Indeco hammers working on the banks of the Werribee river

The Werribee river is part of the Port Phillip catchment area located on the expansive lowland plain south-west of Melbourne, Victoria, Australia.

Just a few kilometres from the watercourse is the town of Eynesbury, for which the Victoria state government has planned to build a water recycling pipeline that will run under the river bed.

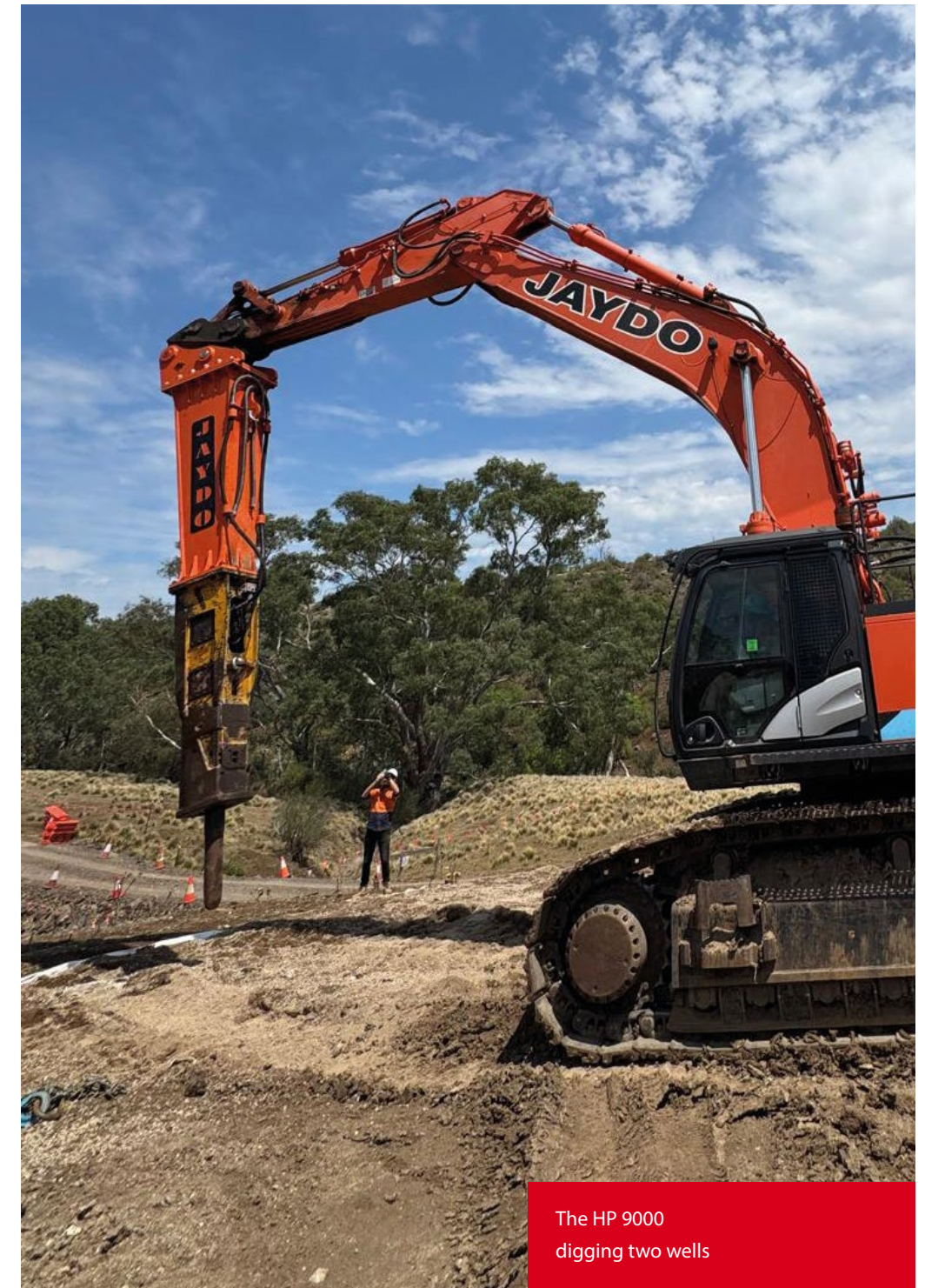
The area has one of the largest eucalyptus forests in the country, home to endangered flora and fauna, so any work must be carried out with minimal disturbance to the surrounding environment.

Great Western Water was contracted by the Victoria state government to install the pipeline. This was done by drilling two 15-metre deep wells to hold the drilling machine that will penetrate under the river.



The excavation of the two wells was awarded to Jaydo Construction, a company specialising in water infrastructures, sewerage and drainage systems, which owns a wide range of Indeco hammers: an HP 18000, 3 HP 12000, 4 HP 9000, 4 HP 7000, 2 HP 5000, 1 HP 4000 and an HP 2500. The work was carried out by two Indeco hammers: an HP 12000 mounted

on a Hitachi 69-tonne excavator to dig down to 11 metres and an HP 9000 for which Jaydo, with the support of the Indeco team and South East Engineering, designed an extension that would allow the machine to continue digging for an extra 3 metres to reach the scheduled 15 metres.



The HP 9000
digging two wells

News

Indeco at Bauma 2025 with its latest hard-driving products

Once again, Indeco's involvement at Bauma, the world's largest trade fair for construction and mining machinery, is an important opportunity to showcase the latest developments in our range of products and accessories.

The main one concerns a new demolition product that will pave the way for a new range. The introduction of three new models of forestry mulching heads will expand the range of options available for excavators, compact excavators and Skid Steers. As regards the classic hammers, the most important innovations concern the technological upgrading of our automatic greasing systems, with a few substantial changes to the control unit circuits.



The new Indeco Lube system control units

New Indeco IDC primary demolition jaw

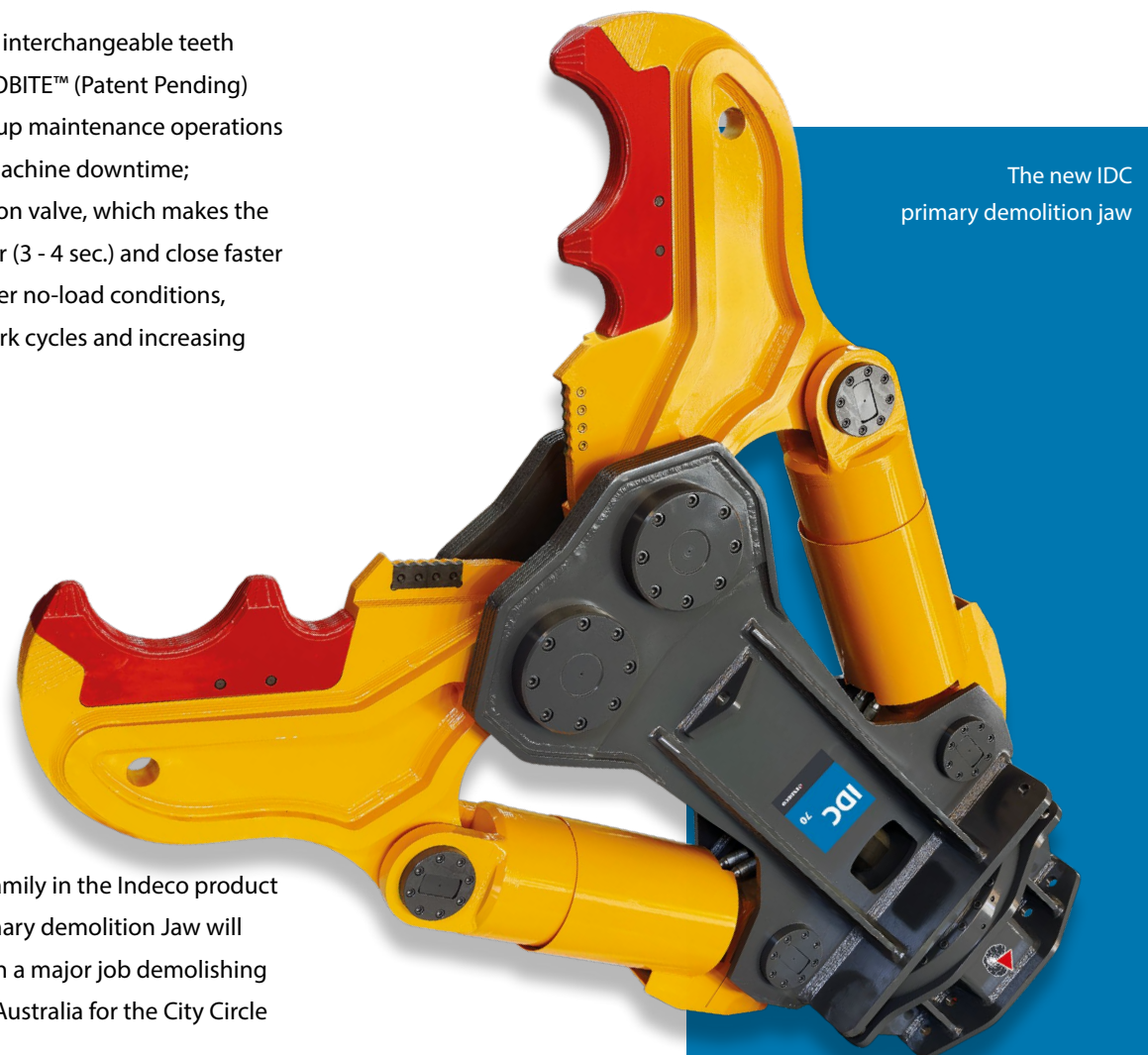
Specifically designed for primary demolition work on reinforced concrete structures, Indeco's IDC jaw is a very large attachment (3350 mm long by 610 mm wide) whose design was studied to optimise the weight (7200 kg) to power ratio for precise and efficient operation under all conditions and even at great heights.

Here are a few of its main features:

- a maximum jaw opening (1800 mm) which is larger than that of similar rival products of the same class;
- two large cylinders, made to a unique Indeco design, which provide the necessary force (350 bar) in every jobsite condition, fitted with long-life seals that can withstand up to 700 bar;
- full 360° hydraulic rotation, with dual motor and protection valve, which provides better demolition in all logistic conditions and an always optimal grip;

- the innovative interchangeable teeth system INDECOBITE™ (Patent Pending) which speeds up maintenance operations and reduces machine downtime;
- the regeneration valve, which makes the jaw open faster (3 - 4 sec.) and close faster (5 - 7 sec.) under no-load conditions, shortening work cycles and increasing productivity.

The first of a new family in the Indeco product range, the IDC primary demolition Jaw will soon be working on a major job demolishing large structures in Australia for the City Circle Group.



The new IDC primary demolition jaw

Indeco Lube System: on-board control unit upgrade

Among the most important accessories for hydraulic hammers, the automatic greasing system is designed to keep the hammers in perfect working order at all times by using the right amount of lubricant and cutting out the machine downtimes needed for manual greasing. Following the specific request of users, Indeco technicians have recently started using smaller hammers.

The systems are divided into two categories: those with control unit and tank mounted on the excavator and those on-board mounted directly on the hammer fitted with pump and cartridge. Only the "Compact" and "Maxi" versions of the on-board systems were upgraded, which now no longer feature two HYD lines but a single HYD line as on the "Mini" model.

Mulching Heads IMH: three new models to complete the range

After the significant technological upgrade in 2022, the range of mulching heads IMH now includes three new models, one for each segment, offering operators a wider choice:

- IMH 4 is the new model to complete the range of mulching heads IMH for compact excavators (from 3 to 18 tonnes), designed to offer the utmost in sturdiness, efficiency and productivity. The new model is the perfect attachment for 4 to 6 tonne machines;
- IMH 30 is the new large model (weighing 1930 kg; 1270 mm cutting width) in the IMH series of mulching heads for excavators, which extends the compatibility of the range to up to 49 tonne machines;
- IMH 5.2 SS also extends the range of mulching heads for Skid Steers and tracked skid steers with a hydraulic capacity up to 185 litres per minute and weighing 6 tonnes. With a cutting width of 1830 mm, the new IMH 5.2 SS can process a larger working area with a machine of the same weight.



Our people

A great team for the new Indeco Canada

The opening of Indeco's new branch in Canada marks an important step for our company, strengthening our foothold in the North American market and reaffirming our commitment to offering superior quality solutions to our customers. This expansion was led by a team of highly qualified professionals, capable of carrying on the

tradition of excellence and reliability that makes Indeco stand out. The new subsidiary is headed by a team of highly experienced professionals: Mike Pietroniro, Chairman and General Manager, with more than 40 years in the heavy equipment industry; Pierre Cloutier, with over 25 years of experience, leading the Canadian sales team; Denis Forget and

Jason Pietroniro, both sales managers with impressive professional backgrounds; last but not least, Andrew Caruana, who is in charge of Parts and Services. A strong team, united by the same vision of growth and innovation. Among the new leading figures, we are proud to welcome Denis DeChamplain, appointed Sales Director of the Québec division. Denis is an industry veteran with more than 40 years of experience in excavation and demolition accessories. His expertise and dedication to customer service are an outstanding value for Indeco Canada.

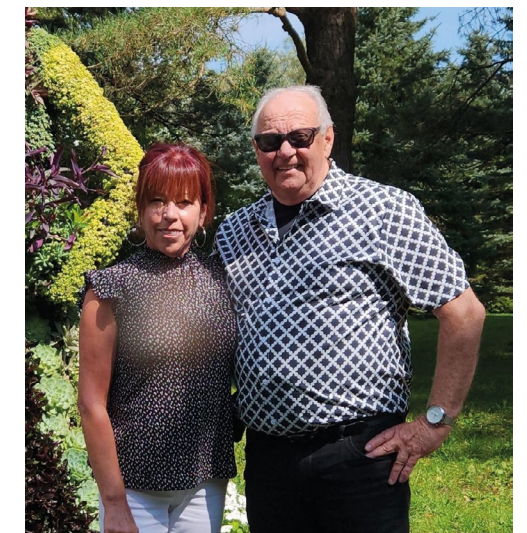
Denis perfectly embodies the Indeco philosophy with a meticulous focus on customer needs, a pragmatic approach and an unwavering passion for innovation. His vast experience and strong approach to customer support precisely reflect the expectations of our customers and fit in perfectly with our team's culture.

He will work closely alongside our team to offer the best accessories, the best support and the most effective solutions.

But not only is Denis an excellent professional, he is also a genuine person committed to family and community values.

Together with his wife Denise he shares a passion for fine cuisine and outdoor activities. This personal aspect is evident in his approach to work, where human contact and customer relations are always at the forefront.

We are very excited about this new phase and positive that the leadership of Denis and of the whole Indeco Canada team will lead to new achievements.



Denis DeChamplain with his wife Denise

Fairs

Our next appointments

BATIMATEC 2025

4/8 May 2025
Algeri (Algeria)

EXPO CONSTRUCCIÓN & EXPODISEÑO 2025

20/25 May 2025
Bogotá (Colombia)

OSTBAU 2025

22/24 May 2025
Berlin (Germany)

CSPI EXPO 2025

18/21 June 2025
Tokyo (Japan)

MATEXPO 2025

10/14 September 2025
Kortrijk (Belgium)

MINING INDONESIA 2025

17/20 September 2025
Giacarta (Indonesia)

CBA EXPO 2025

24/26 September 2025
Bangkok (Thailand)

ECOMONDO 2025

4/7 November 2025
Rimini (Italy)

EXCON 2025

9/13 December 2025
Bengaluru (India)



The Indeco stand at Bauma 2022 (Munich)



Two pictures of the Indeco stand at Samoter 2023 (Verona)



**Made of the same substance
of your needs.**



This is how we design our hydraulic attachments: starting from the characteristics of the materials they will be used on. To offer you a complete range of solutions to best meet your needs in terms of productivity, efficiency, reliability, versatility, and durability.



Discover
the range

