

indecommunity

[case history](#)

[around the world](#)

[news](#)

[our people](#)

[trade fairs](#)

[n.10/2013](#)



Two large Indeco breakers on a submarine mission

An ISS 25-40 Makes Trash into Cash

The most recent addition to the Indeco family rotates

The Indeco IBS pedestal boom system



editorial

Quality, the key to surviving the crisis

FRONT COVER
An HP 5000 and HP 7000 in action during underwater excavations at Polignano harbour, near Bari.
photo by ART Snc di Antonio e Roberto Tartaglione

COPYWRITING AND ART DIRECTION
CaruccioChirazzi

EDITORIAL CO-ORDINATION
nf@carucciochirazzi.com
mm@carucciochirazzi.com
sl@carucciochirazzi.com

ACKNOWLEDGEMENTS
for the article: "Two large Indeco breakers on a submarine mission for the new marina in Polignano a Mare" on p. 4, Cala Ponte SpA, from Noci, near Bari.
For the photos: ART Snc di Antonio e Roberto Tartaglione

for the article and photos: "An ISS 25-40 Makes Trash into Cash" on p. 9 Ryan Murphy, Marketing Manager Indeco North America - 135 Research Drive Milford CT, 06460 - www.indeco-breakers.com

for the article and photos: "A Winning Trio, the Indeco IBS Boom System", on p. 10, Paul Timoney Sales and Marketing Manager Indeco Australia Pty Ltd, 1 Burgess Street 3025 Altona North, Victoria, Australia
www.indeco.com.au

for the article: "An IFP 1000 being used in the demolition of Turi hospital near Bari" on p. 12, Gesmundo Demolizioni srl, from Terlizzi near Bari; photos by ART Snc di Antonio e Roberto Tartaglione

for the articles: "The most recent addition to the Indeco family rotates", "New ISS 10-20: small on size, big on performance" pp. 13-14, Indeco Technical Department, photos by ART Snc di Antonio e Roberto Tartaglione;

for the article: "The Indeco IBS pedestal boom system" on p. 15, Indeco Technical Department; photos by Paul Timoney, Sales and Marketing Manager Indeco Australia Pty Ltd, 1 Burgess Street 3025 Altona North, Victoria, Australia
www.indeco.com.au

for the photo on the back cover: Giuseppe Cannavale, Mosmode Srl, Crotone
www.mosmode.it

Indeco Ind. S.p.A.
Viale Lindemann, 10 z.i.
70132 Bari - Italia
tel. +39 080 531 33 70
fax +39 080 537 79 76
info@indeco.it

The current severe economic crisis has challenged our certainties and disturbed our beauty sleep. For Marx, capitalist society was classically based on physical capital, in a dialectical relationship with the workforce. But in the last 20 years, a combination of new global geopolitics (globalisation), technological progress (computerisation) and ideology (marketism) has given financial capital a head start over old capital, over labour, over nations, over everyone's lives. Just like after 1929, we badly need a New Deal. This should on the one hand reduce the unbridled power of the financial world and on the other boost public investment in major infrastructure projects. But all that is simply not enough if we fail to rethink the Western industrial economy, if we fail to move on from the Fordist/Taylorist model, via the inebriation of the post-industrial period, unless we accept the principle that no economy can succeed unless it is based on bringing together scientific knowledge, services and production systems, especially when it comes to small and medium-sized enterprises. That is why, from an ethical point of view, Western businessmen have to take a long hard look at the disasters caused by offshoring and go back to manufacturing goods in their own countries. These are real-life issues, that we need to look firmly in the eye, not mere fantasies: if we are going to master the crisis, we have to raise the stakes and grow.

So here at Indeco we have decided to focus on communication and on an advertising campaign to talk about what we're doing, about "made in Italy", about product quality and organisation, about continuous technological research that leads to an increasingly broad and diverse range of products.

If we cannot compete with the production costs and therefore the prices charged by manufacturers in developing countries, the solution is not to pull the wool over the eyes of our customers, like many of our European competitors do, by manufacturing where it costs less and then selling the product as if it were "made in Europe". Our challenge is to focus on our creativity, on our organisational skills, on our research, so as to provide the market with products and services of superior quality and restore the gap we had lost. In the succinct words of the Ancient Romans "Ad Maiora!" To greater things!

Michele Vitulano
Marketing Manager

INDECO DO IT BETTER

CHOOSING INDECO MEANS CHOOSING THE QUALITY OF A GENUINE MADE IN ITALY PRODUCT

Whether it's breakers, shears, fixed or rotating pulverizers, the multifunction, compactors, demolition sorting grabs or pedestal boom systems, choosing Indeco means choosing the quality guaranteed by the "Made in Italy" label. And for us, that quality guarantee means direct control of each stage in the manufacturing process; a perfect blend of industrial technology and craftsmanship; design, engineering and implementation of solutions to meet the specific needs of our users; use of exclusive special materials based on our own patents; stringent testing and excellent after sales support. Because here at Indeco, we enjoy doing things well. Or rather, better and better. Quality is an attitude.



INDECO
YOUR PARTNERS IN DEMOLITION

www.indeco.it

case history

Two large Indeco breakers on a submarine mission

A strategic mission entrusted to two Indeco breakers: one HP 5000 and one HP 7000 owned by Trani firm Scavi SaS, mounted on a CAT 325D and on a CAT 330D, respectively

Large Indeco breakers are expected to work with total precision and care, even when used under extreme conditions

such as the underwater excavation works for a new marina in Polignano a Mare, near Bari. ►



case history

The objective and the project

In an area known as Cala Ponte, just outside Polignano a Mare, between two massive sea walls is a harbour that has been almost totally abandoned since the early 1970s. It has remained virtually unused mainly because of some rocky shoals inside the harbour that needed excavation.

The port completion project, which includes creating a yacht marina is a key part of the tourism recovery plan which is being vigorously promoted by the Polignano a Mare town council in conjunction with the nearby towns of Alberobello, Castellana Grotte, Conversano and Monopoli. In fact, given its considerable historic, cultural and environmental heritage, and excellent climate for most of the year, the coast between Bari and Brindisi has always suffered from a chronic lack of entrepreneurial initiatives in the tourism sector, especially when it comes to pleasure craft. A refurbished harbour would also meet the strong demand for berths along that stretch of coast - the nearby ports of Mola di Bari and Monopoli simply do not have the capacity. It should also be underlined that the improvements to the existing harbour need to be implemented with caution, since this is an area of great natural beauty.



The harbour under current conditions

Polignano a Mare harbour is classified as a port of regional and interregional significance. The area known as Cala Ponte lies about 2 km NW of Polignano, in the suburbs between the town centre (to the south-east) and a tourist and residential area (to the north-west). The port is well-connected with the centre of Polignano and with the nearby SS 16 highway via recently modernised access roads. The existing harbour is made up of a sea wall in two parts, with an overall length of 197 m, and an 85 m long inner quay, creating an entrance channel approximately 110 m in width. The only rudimentary jetties are located along short stretches of the sea wall and inner quay. The harbour and its perimeter are very shallow, with various rocky shoals (formed by the limestone which composes much of the nearby coastline). As regards winds and sea conditions, the harbour is currently particularly exposed to the Scirocco. When this prevailing wind blows hard, the whole harbour becomes unusable. And when the northern Maestrale wind rises, storm surges often break over the top of the sea wall, given that it is only 2.5 metres in height. Also, being 115 m wide, ►

case history

the entrance channel is so broad that the only area properly sheltered from the waves is close to the inner quay, where the water is too shallow for mooring. This exposure to the wind and the sea, combined with the inadequacy of the breakwaters sheltering the harbour, creates very choppy conditions

inside the basin, and together with the dangers posed by the shallows and shoals severely curtails use of the harbour, which is viable mainly in summer months and only for small craft. From October to May, when storm surges are more common, the harbour is declared unfit for use.



The new works

The structural alterations involve extending the inner quay and sea wall, improving the entrance channel and accessibility for craft, installing floating

pontoons, and changing the design and type of onshore facilities. The harbour will be dredged, thus allowing vessels of various sizes to enter and manoeuvre ►

case history

safely, while additional mooring spaces will also be created.

After dredging, the depth along the stretch between the current harbour entrance and the root of the sea wall will be about 4.5 m; meanwhile, the central stretch will be dredged to 3.5 m; the Eastern portion closest to the inner quayside and the shore to the South will be 2.5 m deep, and finally the western part of the harbour, closest to the shore, and designed for the smallest craft, will be dredged to a depth of just 1.5 m. The dredging will be accompanied by expansion, renovation and construction of new berthing spaces along the inner quay and sea wall.

Dredging, volumes and spoils

The sea bottom at Polignano a Mare harbour is mainly rocky, often with a layer of medium-to-fine grain sand, located mainly in the centre of the harbour and close to the existing entrance channel. The results of geognostic surveys performed in the harbour showed the following breakdown of the type of material for dredging:

- 1) medium-to-fine grain sandy material on the surface
- 2) compact limestone.

In addition to excavating the rock, the job involves preliminary removal of the medium-to-fine grain sand; the task needs to be carried out in different parts





of the harbour so as to ensure that the depths set out above are achieved. The fact that the spoils are mainly limestone means they can be re-used. After temporary storage in a nearby area which will serve as the car park in the finished project, most of the limestone will be used as fill when building the new infrastructures (wharfs, quays).

Excavation methods

The sandy materials will be removed using a trailing suction dredger. The rock excavation will be carried out using two Indeco hydraulic breakers, an HP 5000 mounted on a CAT 325D and an HP 7000 mounted on a CAT 330D. Approximately 40,000 m³ will be removed in about 4 months. Trani Scavi have been using Indeco breakers for over 25 years, and they also have an Indeco HP 3000, an HP 500, and an HP 1800. They use only Indeco breakers. ■

The site in brief

- Main Purchaser
Cala Ponte SpA, Noci, Bari province
Temporary Association of Companies between:
- Cooperativa San Martino
from Chioggia, near Venice - Maritime works contractors
 - Trani Scavi SaS
from Trani, near Bari - Excavation contractors
 - Valerio General Costruzioni Srl
Margherita di Savoia, near Foggia - Public and private engineering contractors

Designer and Project Coordinator for Cala Ponte SpA
Giuseppe Lamanna

Technical Works Manager for Cooperativa San Martino
Luca Gallo

Underwater Demolitions Manager for Trani Scavi
Francesco Pertout



around
the world
usa

An ISS 25-40 Makes Trash into Cash



Chuck and Eddie's /Chase Waste Uses an ISS 25-40 to Make Trash into Cash

Chuck and Eddie's Used and New Auto Parts has been in business in Connecticut since the 1940's. Originally engaged in selling only used auto parts, Chuck and Eddie's has grown exponentially and now sells new and used auto parts from three properties and thousands of internet transactions. To deal with the ever-increasing volume of cars, Chuck and Eddie's purchased a company called Chase Metals in 2007 and created Chase Waste Materials Corp. located in New Haven, Connecticut. Chase Waste takes the car bodies from Chuck and Eddie's that have been stripped of their salable parts, and processes them for scrap metals. Chase Waste further serves its community by taking all other demolition and industrial scrap metal waste

for reprocessing. Chase processes ferrous and non-ferrous scrap, copper, aluminum, titanium, brass, stainless steel and other materials. Located very near to Indeco North America, Chase Waste felt comfortable being introduced to the Indeco ISS 25-40 mobile steel shear for initial processing. Mounted in place of the stick on their Volvo EC240 excavator, the ISS 25-40 shear is instrumental in preparing cars and trucks for a trip through the shredder. Approximately 300 tons of steel are processed daily at Chase Waste, and the Indeco shear has its mouth on almost all of it. "The fast cycle times of the Indeco shear have helped us keep pace with the material flow, and allowed us to increase our throughput by 25%" comments Charlie Arcangelo, owner of Chase Waste. "With our new shear, we have been able to accept almost anything that our customers would feed us. And, with the North American headquarters only a few miles down the road, we know spare parts are only a phone call away." ■



around
the world
australia

The Indeco IBS pedestal boom system is a winning combination

A Winning Trio, the Indeco IBS Boom System Decreases Downtime, Increases Productivity and Increases Safety



The J H Cuthbertson quarry at Jindivick has grown from humble beginnings a quarter of a century ago to a sizeable local business employing five full-time employees and a fleet of machinery providing the district with both crushed rock and fill.

The two main products manufactured at the quarry are hornfels, crushed to make driveways and road base, and mudstone which, because of its soft texture, is as perfect for the dairy laneways as it is easy on the cows' hooves.

"We are flat out at the moment!" says

Quarry Supervisor John Persico, "so any obstructions in the process must be dealt with quickly, efficiently and most of all safely". After seeing an advertisement in an industry magazine, John only made one phone call, to Indeco, to get the answers he needed.

The Indeco IBS pedestal boom system is designed to keep your plant running at maximum productivity.

Mounted over the mouth of a crusher, the IBS significantly reduces the timescales and risks associated with manually removing oversized material ▶

around
the world
australia

that may be blocking the hoppers. Indeco's hydraulic arms are built to last for years even in the most difficult of conditions.

Each unit is custom designed for your crushing plant to ensure that your investment provides the maximum return.

After talking to J H Cuthbertson, Indeco designed, manufactured and installed a hydraulic power pack, an arm assembly, and a whisper quiet HP 200 breaker. The unit can be operated either from the mounting point of the arm - which gives an unrestricted view of the work area - or in front of the monitors in the operating cabin, using a mobile radio control unit, ensuring optimum working conditions even in adverse weather.

"The unit has stopped so much down time" John said.

"The hand-held breaker, to be operated safely, ties up two workers to complete the job for 30-45 minutes with the Indeco boom system, it takes just one worker

no more than 10 minutes. That means potentially saving one to two hours' down time a day.

Now that's impressive!"

A partnership agreement with the parent company led to the creation in 1993 of **Indeco Australia**, which quickly established itself as a leading brand on the national demolition market.

Through leading-edge technology, Indeco Australia is today proud to boast a full range of genuine parts.

Backed by Indeco Parts, its comprehensive warehouse of inventory, you can be sure that when you are looking for an answer, Indeco gives you a 100% guarantee and commitment.

All of the Australian warehouses are electronically linked and have an overnight transfer facility between them. All Indeco Australia products are backed by a comprehensive warehouse of genuine parts and accessories - from enhancements for new products to repairs for older machines. ■



around
the world
italy

An IFP 1000 being used
in the demolition of Turi
hospital near Bari



As part of the redevelopment and greening programme for its suburbs, the municipality of Turi ordered the demolition of an old building that had once been a hospital. This involved reducing about 4000 m³ of material. The Indeco IFP 1000 pulverizer has been separating out the rebar (the steel rods used to reinforce the concrete) from the rubble. The pulverizer processed a total of

15,000 m³ of debris, which was then further reduced in a crusher. The whole job took less than a month. The demolitions were carried out by Gesmundo Demolizioni Srl from Terlizzi, near Bari, who have been Indeco customers for over 15 years. As well as the IFP 1000, they also own an HP 200, an HP 350, an HP 2500 and an HP 3000. ■



news

The most recent addition
to the Indeco family
rotates

The new line of Indeco IHC Series-R rotating compactors has been created to help you work even under the toughest conditions

These rotating compactors have continuous 360° rotation, which means they can be used wherever the excavator is; the hydraulic fittings are in line with the carrier boom; the hydraulic rotation motor is easy to access; and the upper attachment plate is reinforced.

The IHC compactors efficiently replace traditional hand-held equipment, thus reducing accident risk.

In slope applications, these machines eliminate self-propelled rollers and the risk of rollover. Indeco compactors (mounted straight onto the carrier boom) are hydraulically driven with an oil-bath bearing system.

This hydraulic system gives a balanced design of compaction force and vibration speed, so as to achieve the depth penetration needed to reduce air voids and move more material faster. ■



Technical data	IHC 50 R	IHC 75 R	IHC 150 R	IHC 250 R
Excavator weight	1,7 ÷ 6,4 tons	4 ÷ 12 tons	7,5 ÷ 22 tons	18 ÷ 45 tons
Equipment weight	350 Kg	580 Kg	970 Kg	1350 Kg
Rotation	3000 g/min	2100 g/min	2100 g/min	2100 g/min

The new ISS 10-20: small on size, big on performance

The smallest shear, designed for 10-ton excavators

Like Indeco's other shears, the latest addition to the range, the ISS 10-20, will also have outstanding cutting force due to a series of special design features: its exclusive dual-profile piercing tip system, its four special steel blades, fully reversible and interchangeable; its dual blade-guide system; its deep jaw and long blades; its cutting register adjustment system. The specific benefits of Indeco hydraulic shears include its regeneration valve which

speeds up no-load movement of the jaw, thus speeding up opening and closing; its heavy-duty pivot group which keeps the jaws aligned and prevents buckling; its large, powerful hydraulic cylinder, an exclusive Indeco design, which provides enough force to deal with any type of working conditions; and its long-lasting seals that can withstand up to 700 bars of pressure. ■

Technical Data	ISS 10/20
Excavator weight 2 [^] member	10 tons
Excavator weight 3 [^] member	20 tons
Steel shear weight (excluding mounting bracket)	1800 kg
Maximum working pressure	400 bars
Maximum oil delivery	100 ÷ 200 l/min
Maximum clamping force at tip	65 tons
Clamping force class	600 tons
Length	2724 mm
Jaw width	450 mm
Jaw opening	500 mm
Shear length	500 mm
Closure time (no-load)	1,5 ÷ 3 sec
Opening time (no-load)	1,5 ÷ 3 sec



The Indeco IBS pedestal boom system

A new series of high-tech products, designed and tailored to meet customers' specific requirements and individual needs



Produced and marketed a few years ago by Indeco North America and Indeco Australia, the Indeco IBS pedestal boom secondary breaking system looks destined to make a strong impact on many other markets, having already proven to save time and money in many a quarry and mine. Mounted over the mouth of a primary crusher, it is used to reduce bridged and oversized material which slows down crushing operations: By doing so, plant down times can be

eliminated. With their unique design and special high-strength steels, the IBS range of pedestal boom systems have outstanding reliability, productivity and durability, and an excellent quality-price ratio. These improvements are due in part to the use of computational tools such as FEA - Finite Element Analysis - which performs structural and stress tests, making it possible to test and improve the product before the start of the manufacturing process. ►



Some of the main features of the Indeco IBS

The **hydraulic cylinders**, designed and manufactured by the Indeco technical division to exclusive specifications, are oversized to provide maximum power and hydraulic efficiency and ensure greater reliability even in demanding applications.

The **rotation capacity**, available in three different formats, according to the job at hand: 360° with slewing ring and hydraulic motor, 180° with a special hydraulic actuator or 150° with lateral hydraulic pistons.

The **automatic lubrication kit for boom and breaker** optimises grease consumption, cutting out the machine down times once needed to lubricate moving parts.

The kit includes a programmable pumping unit pack, hoses and breaker and boom fittings.

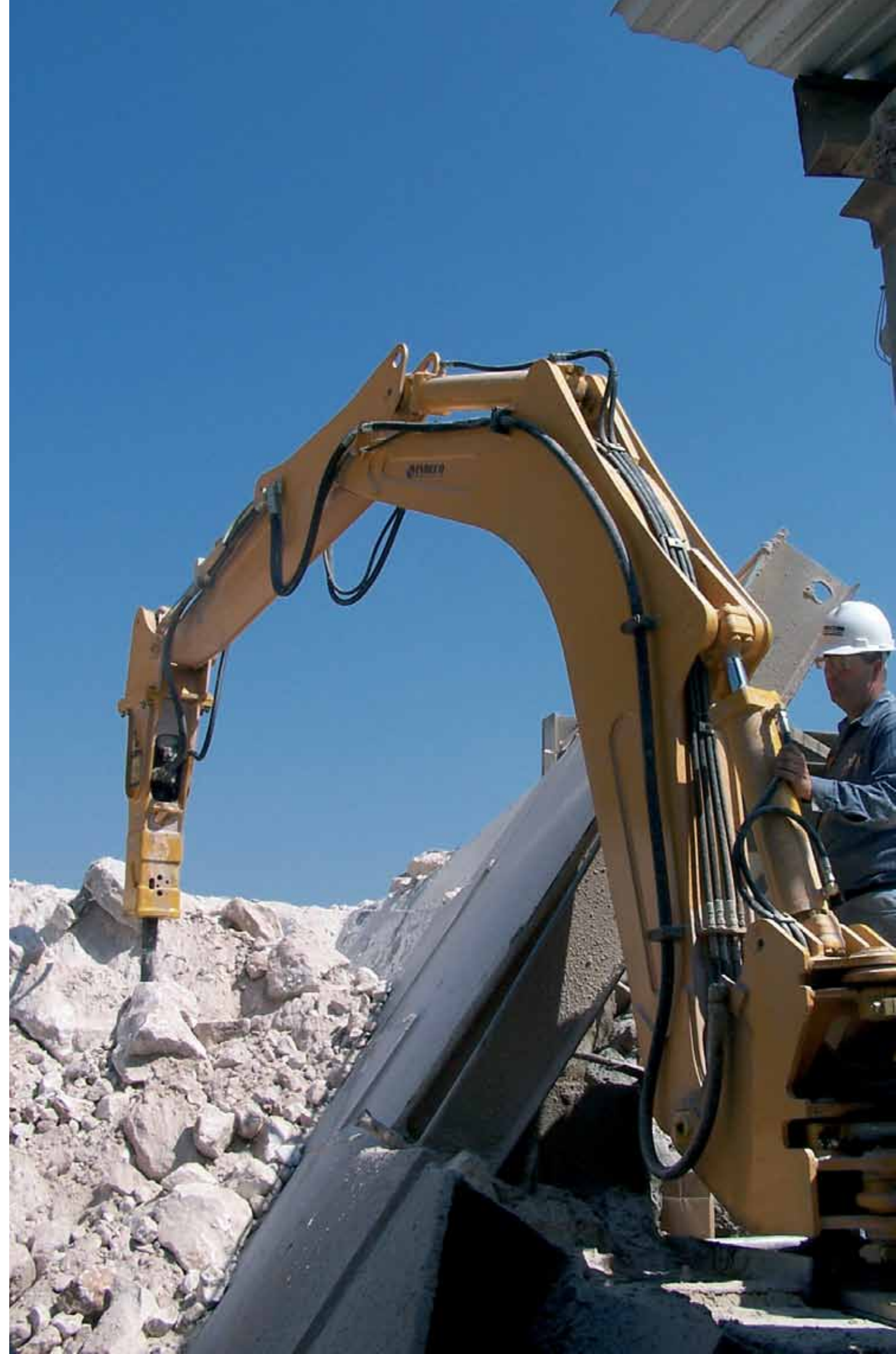
The system increases the service life of all the ball bushings on the boom and in the moving parts of the breaker.

Three possible articulations help to increase the working area when the breaker is in a vertical position, to reach inaccessible positions under the mounting base, and to increase versatility of use.

The **control system** with its electro-hydraulic proportional valve, manufactured to Indeco specifications enables you to use the IBS boom system safely from the operating cabin, in two different modes: remote control, with a special cable up to 90 metres in length and a wireless radio-controlled type for distances of up to 30 metres.

Special reinforced box sections inside the boom make it more rugged, and more resistant to torsion and buckling.

Anti-drop and load control valves, mounted on the cylinders, prevent the boom from accidentally collapsing and at the same time improve safety. ■



our people

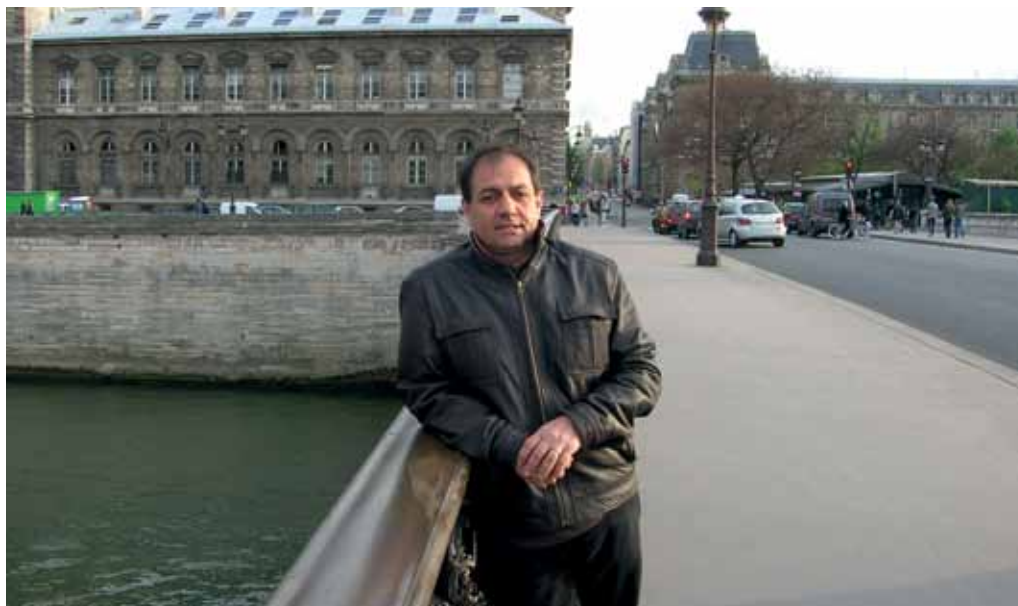


To a friend

On February 2, we lost a colleague, a friend, a technical expert, someone we could trust. Always on the move, travelling wherever his technical knowledge and maintenance skills were needed, Antonio Donvito was a key figure and an absolute guarantee of reliability and professionalism for everyone. Ever smiling, discreet and always willing to help, Tonino had been part of the Indeco family since way back in 1989. An exemplary husband and a great father to three splendid daughters, he had a passion for dancing and playing table football, a “discipline” in which he

was almost unbeatable. But where he excelled most was without doubt in the workplace: in his hands, excavators and breakers were soon brought back to full efficiency. His communication skills, his technical ability and his problem-solving capacities endeared Tonino to all of Indeco’s customers and dealers, as well as earning him the respect of our competitors. We will miss everything about him. Our only consolation is to know that his spirit will always be with us, ready to lend a hand as soon as we need him. Just as we will take care of your lovely family - you can count on that.

Ciao Tonino! Thanks for everything.
Mauro Vitulano
Managing Director, Indeco Ind. S.p.A.



trade fairs



The Indeco stand at Intermat 2012 (Paris).



The Indeco stand at Ecomondo 2012 (Rimini - Italy).

The next dates for your diary

INTERNATIONAL BUILDING
TRADE FAIR
Belgrade - Serbia, April 16-20

CONSTRUCT EXPO
ANTREPRENOR
Bucharest - Romania, April 18-21

HEAVY EQUIPMENT SHOW
Toronto - Canada, April 18-19

PLANTWORKS
Coventry - United Kingdom, May 14-16

CIVENEX
Sydney - Australia, May 15-16

MASZBUD
Kielce - Poland, May 21-24

CTT
Moscow - Russia, May 4-8

CONSTRUCTION EXPO
São Paulo - Brazil, May 5-8

CONSTRUIR MINAS
Belo Horizonte - Brazil, June 10-13

MATEXPO
Courtrai (Kortrijk) - Belgium, September 4-8

BALTICBUILD
St. Petersburg - Russia,
September 11-13

BAUMA AFRICA
Johannesburg - South Africa
September 18-21

CONSTRUMAR
Casablanca - Morocco, October 9-12

EXCON
Bangalore - India, November 20-24



your photos

Cutting ferrous scrap with an ISS 25-40 hydraulic shear, mounted on a New Holland 385 excavator. Photo sent in by Giuseppe Cannavale of Mosmode Srl in the Southern Italian city of Crotone. The company specialises in assembly, dismantling and demolition works, and has been active since 1850 in the recovery of metallic materials - www.mosmode.it