



Multi Grabs

IMG S - Sorting Jaws

IMG D - Demolition Sorting Jaws

IMG H - Material Handling Jaws


IMG L - Loading Jaws

IMG T - Timber Jaws



A TOOL FOR EVERY JOB

Application areas



Demolition & Renovation

		S	D	H	L	T
Light demolition	• Demolition of masonry structures		○			
	• Brickwork		○			
	• Natural stone		○			
	• Renovation of interiors		○			
	• Autoclaved aerated concrete					
Demolition of non-reinforced concrete structures	• Primary demolition of lightweight and standard concrete		○			
	• Primary demolition of heavyweight concrete					
	• Wall elements		○			
	• Secondary demolition		○			
Composite steel & concrete structure demolition	• Primary demolition of lightweight and standard reinforced concrete					
	• Primary demolition of heavyweight steel - reinforced concrete					
	• Secondary demolition floors, slabs and beams					
	• Separating rebars from pillars and struts					
	• Fiber-reinforced concrete					
	• Cutting rebars and steel reinforcements					
Demolition of metallic buildings and structures	• Demolition of refineries					
	• Cutting of metal and steel structures					
	• Cutting steel girders/beams					
	• Cutting reinforcements					
Sorting and loading	• Sorting	○	○			
	• Loading	○			○	
	• Waste handling	○		○	○	
	• Site clean-up	○		○	○	
Pavement demolition	• Asphalt					
	• Concrete		○			
	• Composite surfaces		○			
Earth moving works	• Trenching					
	• Ground excavation					
	• Floor leveling					
	• Soil compaction					
	• Trench compaction					
	• Loading soil or bulk material	○			○	
Foundation works	• Building foundation excavation					
	• Ground leveling					
Building construction	• Foundation pile driving					
	• Compaction around pillars					
Material Handling	• Loading soil or bulk material	○			○	
	• Handling rock or breakwaters			○	○	
	• Material transport, storage, positioning	○		○	○	
	• Timber log handling			○		○

IMG S| Sorting Jaws

IMG D| Demolition Sorting Jaws



Infrastructures



Agriculture and Forestry

		S	D	H	L	T
Tunnelling	• Tunnel excavation					
	• Roof, face & rib scaling					
Underwater application	• Dredging					
	• Dock deepening & extension					
	• Canal deepening & extension					
	• Loading soil or bulk material	○			○	
	• Handling rock or breakwaters			○	○	
Trenching	• Oil & gas, water & sewage (deep trenching)					
	• Trenching					
	• Trench soil compaction					
Road construction	• Pile driving and guard rail driving					
	• Asphalt repair					
	• Maintenance work (driveways, sidewalks and parking lots)					
	• Block paving					
Gardening & landscaping	• Fencing					
	• Ground excavation					
	• Rock breaking					
	• Pit planting					
	• Stump splitting					
	• Golf course maintenance					
	• Root and stump grinding					
	• Hedgerow clearance and rejuvenation					
	• Grinding of logging residues					
Forestry	• Timber log handling			○		○
	• Maintenance of green area, small trees and brush					
	• Creation and upkeep of woodland corridors and firebreaks					
	• Tree clearing					
	• Vegetation clearing					
	• Branch clearing					
Processing	• Scrap material processing					
	• Cutting tires					
	• Processing rail cars					
	• Processing cars, trucks and general automotive					
	• Cutting tanks					
Handling and sorting	• Scrap material handling	○		○		
	• Scrap material sorting			○		
	• Urban waste	○		○		
	• Industrial waste	○		○		
	• Wood and tires			○		○
Downsizing and sorting	• Material downsizing and sorting in recycling quarries					

IMG H| 3+2 Material Handling Jaws

IMG L| Loading Jaws

IMG T| Timber Jaws

IMG jaws

Years of experience have enabled Indeco to meet the specific demands of the market by designing and developing - with all our usual excellence in terms of innovation, quality and reliability - this line of equipment for a wide range of sectors, from demolition to forestry jobs. The five different models of Indeco IMG jaws run on the same hydraulic system, an upgrade compared with the previous IDG system, combined with the 360° rotation mechanism found on all of Indeco's other rotating products. Its innovative design features, specifically created to handle each product variant, and its use of special HARDOX® wear-resistant steels, have helped to combine some key features such as outstanding robustness and light weight, as well as above-average payload and gripping force. Its exceptional maneuverability, its mounting bracket compatible with other Indeco products, the efficiency of its hydraulic system which ensures maximum precision in handling and is cheap to run are just some of the extra qualities that make Indeco IMG jaws such safe and reliable partners.

Having such a wide range of models, in each of the five product variants, means there is always a perfect combination for your carrier, no matter what size it is.

IMG S - Sorting Jaws

Indeco IMG S sorting jaws are the ideal tools for sorting waste materials from demolition work; for clearing stony ground and for dredging rivers and seas.

IMG D - Demolition Sorting Jaws

Indeco IMG D demolition sorting jaws are ideal for light demolition jobs such as demolishing wood and brick structures and can also be used to select and handle waste materials. Their unique structure, outstanding maneuverability, power and high payload are ideal for recycling and recovery.

IMG H - 3+2 Material Handling Jaws

Designed to facilitate handling of large objects such as scrap metal, vehicles and other demolition scrap, IMG H jaws provide a safe, powerful grip thanks to their strong interlocking teeth and hydraulic rotation system.

IMG L - Loading Jaws

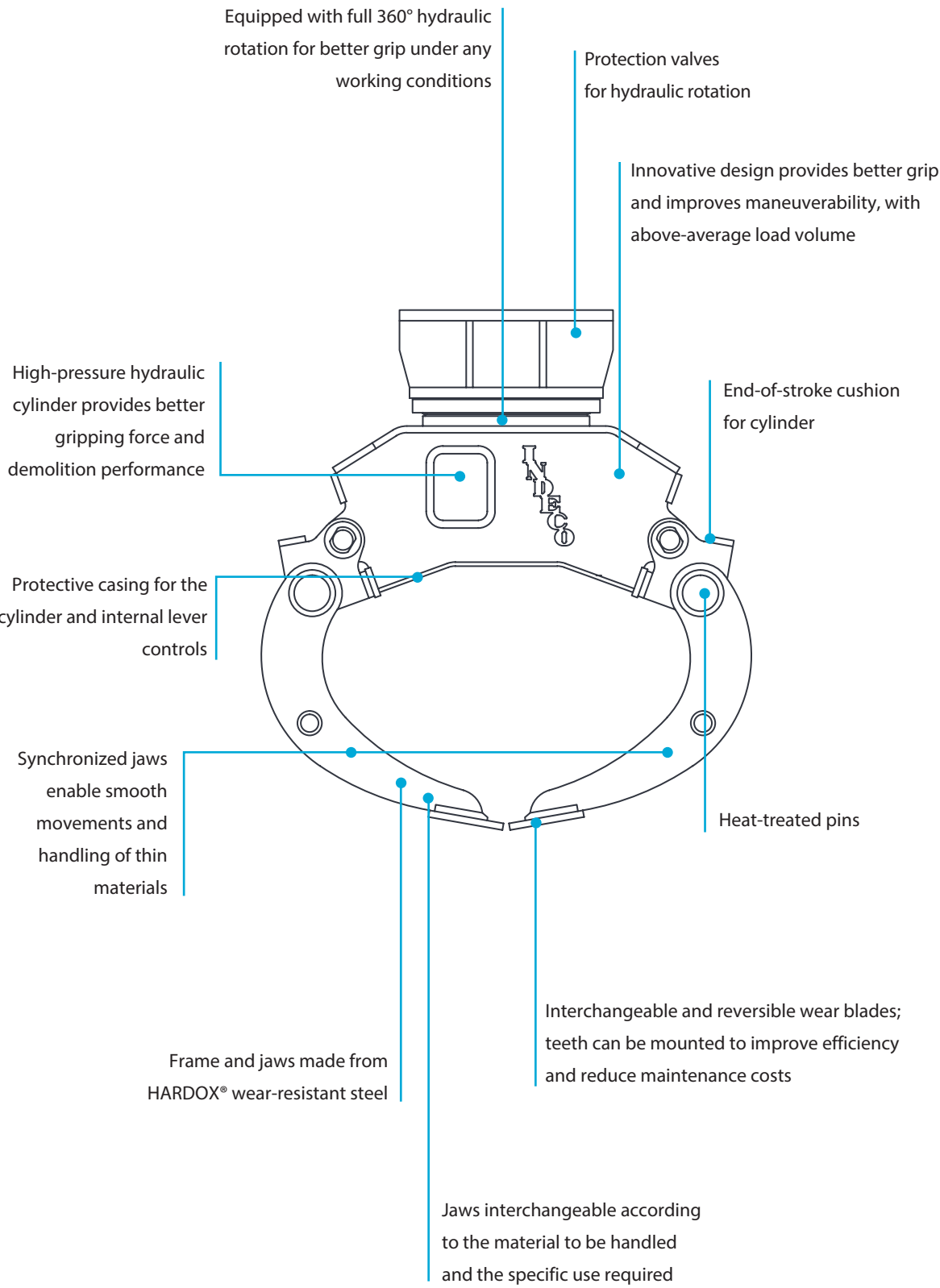
The geometry of the Indeco IMG L loading jaws is designed for maximum load, making them ideal for moving earth, gravel, sand, mud, boulders, agricultural and industrial waste, urban waste, minerals, etc.

IMG T - Timber Jaws

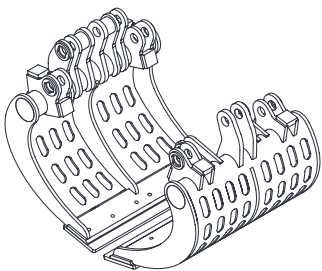
Designed to combine maximum gripping force with the lightest possible weight, Indeco IMG T grabs facilitate the handling of large tree trunks in forestry operations.



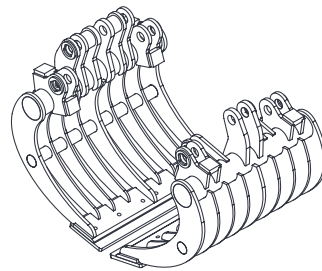
Features of IMG jaws



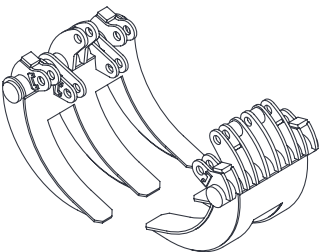
IMG S - Sorting Jaws



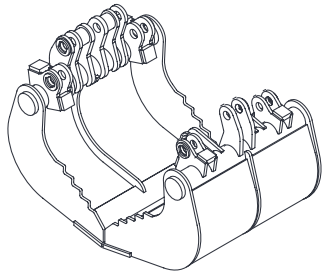
IMG D - Demolition Sorting Jaws



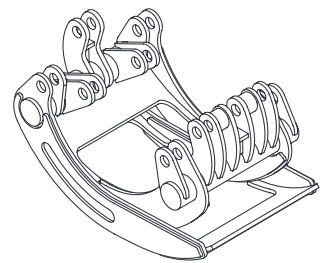
IMG H - 3+2 Material Handling Jaws



IMG L - Loading Jaws



IMG T - Timber Jaws



Technical Data	IMG 400	IMG 600	IMG 1200
Type of carrier	13	134	45
Excavator weight	6500 ÷ 22000 lbs	11000 ÷ 35500 lbs	26500 ÷ 48500 lbs
Maximum working pressure	4400 psi	4400 psi	4400 psi
Maximum oil delivery	8 gpm	13.5 gpm	19 gpm
Hydraulic connections for cylinder	1/2"	1/2"	3/4"
Maximum rotation pressure	1500 psi	1500 psi	1500 psi
Maximum rotation oil flow	3 gpm	3 gpm	5.5 gpm
Hydraulic connections for rotation	3/8"	3/8"	1/2"
Maximum force at blade/teeth	7000 lbs	9000 lbs	13500 lbs
Compatibility of attachment plate with hammer	HP 1250	HP 1250	HP 3000 - HP 4000

Sorting Jaws	IMG 400 S	IMG 600 S	IMG 1200 S
Attachment operating weight*	850 lbs	1300 lbs	2550 lbs
Load capacity	11600 in³	19600 in³	37900 in³
Jaw width	36 in	43 in	52 in
Maximum opening	60 in	68 in	88 in
Depth	24 in	28 in	36 in

Demolition Sorting Jaws	IMG 400 D	IMG 600 D	IMG 1200 D
Attachment operating weight*	900 lbs	1350 lbs	2650 lbs
Load capacity	11600 in³	19600 in³	37900 in³
Maximum opening	60 in	70 in	90 in
Depth	24 in	28 in	36 in

Material Handling Jaws 3+2	IMG 400 H	IMG 600 H	IMG 1200 H
Attachment operating weight*	950 lbs	1450 lbs	2850 lbs
Maximum opening	40 in	50 in	60 in
Depth	24 in	26 in	34 in

Loading Jaws	IMG 400 L	IMG 600 L	IMG 1200 L
Attachment operating weight*	950 lbs	1400 lbs	2750 lbs
Load capacity	11600 in³	19600 in³	37900 in³
Maximum opening	60 in	70 in	90 in
Depth	24 in	28 in	36 in

Timber Jaws	IMG 400 T	IMG 600 T	IMG 1200 T
Attachment operating weight*	950 lbs	1400 lbs	2750 lbs
Maximum opening	40 in	50 in	60 in
Depth	24 in	26 in	34 in

*The operating weight of the equipment includes mounting bracket compatible with Indeco construction standards. Any differences in weight may be due to a different mounting bracket configuration.

Carrier key



Technical Data	IMG 1700	IMG 2300	IMG 2800
Type of carrier	45	5	5
Excavator weight	37500 ÷ 66000 lbs	48500 ÷ 88000 lbs	57000 ÷ 110000 lbs
Maximum working pressure	4700 psi	5100 psi	5100 psi
Maximum oil delivery	21.5 gpm	34.5 gpm	42.5 gpm
Hydraulic connections for cylinder	3/4"	3/4"	3/4"
Maximum rotation pressure	1600 psi	1600 psi	1600 psi
Maximum rotation oil flow	5.5 gpm	8 gpm	8 gpm
Hydraulic connections for rotation	1/2"	1/2"	1/2"
Maximum force at blade/teeth	15500 lbs	22000 lbs	26500 lbs
Compatibility of attachment plate with hammer	HP 3000 - HP 4000	HP 5000 ÷ HP 7500	HP 5000 ÷ HP 7500

Sorting Jaws	IMG 1700 S	IMG 2300 S	IMG 2800 S
Attachment operating weight*	3550 lbs	4800 lbs	5850 lbs
Load capacity	55000 in³	82400 in³	103800 in³
Jaw width	58 in	65 in	69 in
Maximum opening	100 in	108 in	120 in
Depth	40 in	44 in	48 in

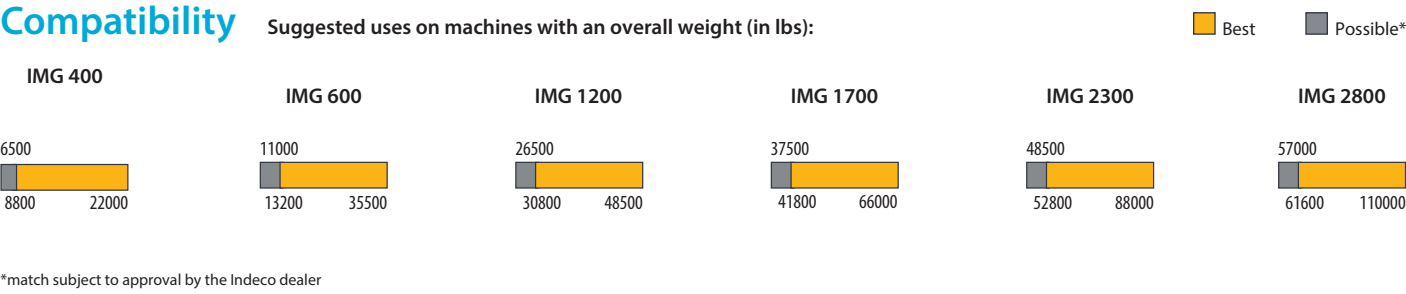
Demolition Sorting Jaws	IMG 1700 D	IMG 2300 D	IMG 2800 D
Attachment operating weight*	3750 lbs	5100 lbs	6200 lbs
Load capacity	55000 in³	82400 in³	103800 in³
Maximum opening	100 in	110 in	120 in
Depth	40 in	44 in	48 in

Material Handling Jaws 3+2	IMG 1700 H	IMG 2300 H	IMG 2800 H
Attachment operating weight*	4000 lbs	5400 lbs	6600 lbs
Maximum opening	70 in	70 in	80 in
Depth	38 in	42 in	46 in

Loading Jaws	IMG 1700 L	IMG 2300 L	IMG 2800 L
Attachment operating weight*	3950 lbs	5300 lbs	6450 lbs
Load capacity	55000 in³	82400 in³	103800 in³
Maximum opening	100 in	110 in	120 in
Depth	40 in	44 in	48 in

Timber Jaws	IMG 1700 T	IMG 2300 T	IMG 2800 T
Attachment operating weight*	3950 lbs	5300 lbs	6450 lbs
Maximum opening	70 in	70 in	80 in
Depth	38 in	42 in	46 in

N.B. All illustrations and numerical data in this catalog are purely indicative and subject to change at our discretion and without notice. We therefore reserve the right to modify them with a view to improving and continuously developing our product.



Accessories

Mounting brackets

Each mounting bracket model can be used with all Indeco products in the same class.



Connecting hoses

We recommend using original Indeco high- and low-pressure hoses to connect various tools to the hydraulic system on the carrier.



Wear blades

Interchangeable and reversible wear blades for greater efficiency and lower maintenance costs; teeth can be mounted.



Quick change teeth - IMG

Teeth with quick-change inserts are available upon request. Easy to replace during maintenance, they are ideal for use in quarries, where the equipment is subject to consistently high levels of wear and tear.



The full range of other Indeco products

Products		Weight	Products		Weight	Products		Weight
IFP	8 X	1650 lbs	IHC	50	450 lbs	ISS***	10/20	5280 lbs
IFP	13 X	2900 lbs	IHC	70	1000 lbs	ISS***	20/30	8030 lbs
IFP	19 X	4000 lbs	IHC	75	1100 lbs	ISS***	25/40	10560 lbs
IFP	28 X	6200 lbs	IHC	150	2150 lbs	ISS***	30/50	13420 lbs
IFP	35 X	7600 lbs	IHC	250	2850 lbs	ISS***	35/60	16720 lbs
IFP	45 X	10050 lbs	IHC R	50	950 lbs	ISS***	45/90	22880 lbs
IRP	5 X	1300 lbs	IHC R	70	1400 lbs	IMH	3	650 lbs
IRP	11 X	2550 lbs	IHC R	75	1500 lbs	IMH	5	1180 lbs
IRP	18 X	3750 lbs	IHC R	150	2650 lbs	IMH	6	1220 lbs
IRP	23 X	5100 lbs	IHC R	250	3350 lbs	IMH	8	1310 lbs
IRP	29 X	6500 lbs	IMG S**	400	850 lbs	IMH	10	1620 lbs
IRP	36 X	7950 lbs	IMG S**	600	1300 lbs	IMH	14	2310 lbs
IRP	45 X	9900 lbs	IMG S**	1200	2550 lbs	IMH	20	3300 lbs
IMP*	15	3300 lbs	IMG S**	1700	3550 lbs	IMH	28	3400 lbs
IMP*	20	4600 lbs	IMG S**	2300	4800 lbs	IMH	4.2 SS	3090 lbs
IMP*	25	5300 lbs	IMG S**	2800	5850 lbs	IMH	SG16	1850 lbs
IMP*	35	7700 lbs	ISS***	5/7	1250 lbs	IMH	SG20	1850 lbs
IMP*	45	9900 lbs	ISS***	8/13	2750 lbs			

*Crusher configuration - **Sorter configuration - ***Third-member configuration

Indeco North America
135 Research Drive
Milford CT, 06460
ph. (203) 713-1030 - fax (203) 713-1040
www.indeco-breakers.com

USA

The contents of this publication may not be reproduced in whole or in part without prior authorization from the Indeco ind S.p.a. All rights reserved.

Trademarks used in this catalog are the property of their respective holders.